



Tamborine Mountain SHOW

CARNAVAL

Pavilion Schedule

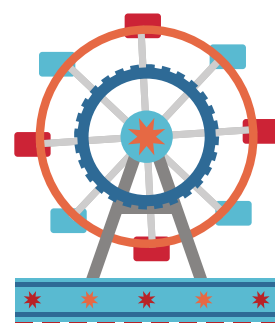


16th March 2024

Family Pass \$35

2 Adults 4 Kids
(under 10)

Single Adult \$10



Markets

Concessions / Child 11 yrs+ \$5

Pony Rides

Food Stalls

Live Music

Reptile Show

Talent Shows

Petting Animals

Amusement Rides

Eating Competition

Costume Competition

Junior Pet Competition

Cakes & Preserves Comps

Flowers & Arts & Crafts Comp



FIREWORKS

8 PM



**On Stage
Entertainment**



Exhibit Enquiries

admintm@tamborinemountainshowgrounds.com

0400 020 127

2024 Tamborine Mountain AH& I SOCIETY INC

EXECUTIVE COMMITTEE 2024

PRESIDENT: Mrs. Anne Hoitink

VICE PRESIDENT: Bruce
Pattinson

TREASURER: Stuart Wright

ASSISTANT TREASURER:
Christopher Duncan

SECRETARY: Wendy Philp

CHIEF STEWARD: Christopher
Duncan

ASSISTANT SECRETARY: Lina
Roth

PATRON: Mrs. Vanessa Bull

Contact Details:

Phone: Secretary: 0400 020127

Postal Address: PO Box 51

NORTH TAMBORINE QLD 4272

Email: admin@tamborinemountainshowgrounds.com

Web: www.tamborinemountainshowgrounds.com



The Tamborine Mountain A H & I Society
acknowledges
the generous support of all our Sponsors,
the Department of Local Government, Planning, Sport & Recreation (Show Societies Grant) and the Scenic Rim Regional Council (Community Grant).

A Brief History of the Tamborine Mountain Show Grounds

The Tamborine Mountain Showgrounds and A H & I Society were born from the need of the growing community of Tamborine Mountain for both a Recreation Ground and an Agricultural Show. A meeting of interested residents convened on 14th September 1928 to consider two pieces of land, with the block offered by the trustees of the Davidson Estate deemed the most suitable. The option was presented to a meeting of the residents of South Tamborine the following Tuesday who confirmed the decision. A Committee was immediately appointed to oversee the purchase and development of the site, and thus the Tamborine Mountain A H & I Society was formed. The sum of £27/6/- was raised by public subscription towards the purchase of the land. By the end of the following year, the full debt of £162 had been paid. Sports Days and gatherings such as dances quickly become regular events at the grounds. Whilst the newspaper reports would indicate that the first Show was in 1930, a photograph held by the Library of Queensland is described as being taken at the first Tamborine Mountain Show in 1929 and that the venue was the Zamia Theatre. The Pavilion at the Grounds is the original Soldiers Memorial Hall, opened on 1st October 1932 by Mr Jason Sharp of the Canungra RSSILA. It was the first Memorial Hall to be dedicated in the Shire. Its opening coincided with the 1932 Show, with the paper reporting a good crowd, and gate takings of £20.

Except for some years around the time of the wars, and in the Year of COVID, the Show has been a constant tradition on the Mountain. These past years have seen an enormous amount of change, both on the Mountain and within the Show. The Tamborine Mountain A H & I Society looks forward to bringing you the 2024 Tamborine Mountain Show.

Tamborine Mountain show 2024

On Stage

10.00 am Dark Rich Fruit cake competition.

10.30 am Junior Pet Competition

11.30 am Tamborine's got Talent Competition

12.30 pm All for Dance - Dancers

1.00 pm Opening ceremony - Lucky Prize giveaways

2.00 pm Costume Competition

2.30 pm Eating Competition

3.00 pm All for Dance – Dancers on stage

3.15 pm Dancing & Singing on stage.

4.00 pm – Band

4.30 pm – Carnival Entertainment

5.00 pm – Band

5.30 pm – Carnival Entertainment

6.00 pm – Band

6.30 pm – Carnival Entertainment

7.00 pm – Band

7.30 pm – Carnival Entertainment

8.00 pm Fireworks

On Arena

Maree Fields Dog Display Entertainment

Friesian Horses – Dancing and Display

Scouts – Free Kids activities

On Grounds

Show rides, Food Vans, Animal Farm, Pony Rides, Reptile Displays, Face painter, Market stalls, Car Show & Shine competition.



**10AM
TILL LATE
SHOWGROUNDS**



SHOW CARNAVAL

16th MARCH 2024

**Winner
Enters
EKKA
COMP**

**DARK RICH
FRUIT CAKE
COMPETITION**

**10 am
On
Stage**

**Sponsored by
Tamborine Mountain AH & I Society**

**1st Prize
\$100
& Rosette**



Entry Forms & Conditions on Website

www.tamborinemountainshowgrounds.com

CONTENTS

GENERAL SECTION RULES		Page
•	General & Section Rules	5
▪	Section 1 <i>Horticulture</i>	7
▪	Section 2 <i>Fruit, Vegetables & Eggs.</i>	12
▪	Section 3 <i>Cooking & Home Produce.</i>	15
▪	Section 4 <i>Home Brew</i>	21
▪	Section 5 <i>Needlework</i>	25
▪	Section 6 <i>Fine & Creative Arts</i>	28
▪	Section 7 <i>Photography</i>	33

GENERAL & SECTION RULES

EXHIBITORS PLEASE NOTE:

The following general rules apply to all exhibitors in all sections. In some sections, additional rules apply. All exhibitors are expected to be familiar with the rules of the Section in which they are exhibiting. **For further**

information, please contact the Chief Steward at
admin@tamborinemountainshowgrounds.com

1. All exhibits must be the property of, the work of or be grown by the exhibitor.
2. All entries must be accompanied by the entry form printed in this schedule or with online entry printout. **Please use a separate entry form for each section you enter.**
3. The Committee reserve the right to cancel or refuse any entry without giving a reason for doing so.
4. The Committee reserves the right to have removed any item which, in their opinion, is considered dangerous or objectionable, and which is entered, exhibited or offered to patrons as an item of sale or as a prize given or distributed or exhibited in any manner, and further reserves the right to immediately cancel space allotted for the current show period and/or any further show period and/or any further show held on these grounds.
5. Prizes may be withheld if, in the opinion of the judge, exhibits are not of sufficient merit. With the approval of the Donor, the Society reserves the right to withhold the award of any trophy if sufficient entries are not received.
6. **Entry Fee:** Unless otherwise stated – \$1 (One Dollar)
7. **Entries for Sections 1 – 7 will be received Friday, 15th MARCH, 2024, between 2 pm & 6 pm. NO POSTAL OR EMAIL ENTRIES WILL BE ACCEPTED UNDER ANY CIRCUMSTANCES.**
8. **Entry Fees: \$1 per class – unless otherwise specified.**
Sections 7 - \$2
9. **ALL** exhibits and prizes are to be collected Sunday, 17th March, 2024 between the hours of 10.00 am and 12.00 pm, unless otherwise negotiated with the Chief Steward or Secretary. All unclaimed exhibits will be disposed of. If another person will be collecting your exhibits, please ensure that your Entry Form is completed appropriately.
10. **Prizes:** First Prize \$5.00, Second Prize \$2.00 unless otherwise stated. All Prize Money must be collected from the Chief Steward, or Section Steward, when collecting Exhibits. All unclaimed prize money will be forfeited to the Show Society after May 8th, 2024.

11. All reasonable care and attention will be taken of exhibits, but no responsibility is accepted in the event of theft or damage.
12. Exhibits must have been made in the last 12 months and not have been exhibited at a previous Tamborine Mountain Show.
13. Except for Sections 2, the Show is for non-professional and amateur exhibitors (a professional is considered someone who derives an income from their work), unless otherwise stated.
14. **ALL CLASSESS** – Please limit entries to (3) THREE per class per person.

NO LATE ENTRIES WILL BE ACCEPTED.

Judging for all Sections will commence at Entry Closing Time (6 pm) on Friday, 15th MARCH, 2024. No entries will be accepted once judging has commenced. Judges' decisions will be final. ANY APPEALS ARE TO BE LODGED WITH THE SHOW SOCIETY SECRETARY AT COST TO THE PERSON LODGING THE APPEAL. THE SOCIETY EXECUTIVE WILL THEN HEAR AND ADJUDICATE SAID APPEAL.

Section 1 - Horticulture

**Prizes: Classes 1 – 5- 1st place: \$10 Sponsored by Birchgrove Nursery,
Classes 6 - 14, 1st place: \$5.00 Sponsored by TM Garden Club, 2nd place:
\$2.00.**

EXHIBITORS PLEASE NOTE:

EXHIBITOR DROP OFF FRIDAY, 15th MARCH, FROM 2 PM TO 6 PM.

COLLECTION OF EXHIBITS SUNDAY, 17th MARCH FROM 10 AM TO 12 PM

1. 'Cut Flowers' requires that only one of any genus may be included.

Examples:

'Three Distinct' – one lupin, one rose and one carnation.

'Single Stem Flowers' – gerbera, poppy

'Cuts' – in addition to single stem flowers, laterals are permitted – freesias, stocks, and daisies.

2. Containers are provided for Cut flowers. All care but no responsibility is taken for containers provided by the exhibitors.

Seed heads are not permitted in Class 28.

Champion Bloom

*Prize Sponsors: Tamborine
Mountain Cuckoo Clock Nest and
Jasmin Organics*

Most Successful Exhibitor Cut Flowers

*Sponsor: Hartley Road Landscaping
Voucher*

Best Exhibit Class 30

Sponsor: Mitre 10 – Weed Killer

Class 1-5 - 1st Prize

*Sponsor: Birchgrove Nursery -
\$10.00*

Most successful Exhibitor Class 15-18

Sponsor: Mason Wines (2 Bottles wine)

Most successful - Junior

*Sponsor: Terra Firma Fertilizer
Prize*

Best Exhibit Class 21

Sponsor: Treehouse Café Voucher

Best Exhibit Class 28

*Sponsor: Chempro Pharmacy –
\$100.00 Gift Pack*



Cut Flowers

1. Rose - Hybrid Tea

1st Prize Sponsored by Birchgrove Nursery

2. Rose - Floribunda One Cut

1st Prize Sponsored by Birchgrove Nursery

3. Rose - David Austin Rose - One Cut

1st Prize Sponsored by Birchgrove Nursery

4. Class 4 Heritage Rose - Single Cut

1st Prize Sponsored by Birchgrove Nursery

5. Class 5 Rose - Any Variety - Best Bunch

1st Prize Sponsored by Birchgrove Nursery



6. Dahlia - Any Variety - One Cut

1st Prize Sponsored by TM Garden Club

7. Class 7 Orchid - Any Variety - One Cut

1st Prize Sponsored by TM Garden Club

8. Class 8 Camelia Sasanqua - One Cut

1st Prize Sponsored by TM Garden Club

9. Class 9 Hibiscus - One Cut

1st Prize Sponsored by TM Garden Club



CUCKOO CLOCK NEST
TAMBORINE MOUNTAIN

AUSTRALIA'S FINEST
CUCKOO CLOCKS

WWW.CUCKOOCLOCKNEST.COM.AU



10. Alstroemeria - Three Cuts

1st Prize Sponsored by TM Garden Club

11. Strelitzia (Bird of Paradise) - One cut plus leaf

1st Prize Sponsored by TM Garden Club

12. Salvia - Three Cuts in Three Distinct Colours

1st Prize Sponsored by TM Garden Club

13. Clivias - Three Cuts

1st Prize Sponsored by TM Garden Club

14. Frangipani - One Branch Cut

1st Prize Sponsored by TM Garden Club

15. Vireya/Rhododendron - One Cut

16. Luculia - One Cut

17. Australian Native - Grevillea - One Cut

18. Australian Native - Banksia - One Cut

19. Australian Native - Waratah - One Cut

20. Australian Native - Any Other Variety - One Cut

21. Protea = One Cut

22. Canna Flower - One Cut

23. Exotic Tree or Scrub - One Cut

24. Any other flower not previously mentioned - One Cut

25. Climber - One Cut

- 26. Flowering Bulb or Corm -
i.e., Belladonna, Nerine
- 27. Lycoris Gladioli - One Cut
- 28. Collection of Flowers - Not
less than six varieties. Own
Container
- 29. Perfumed Exhibit - One Cut

- 30. Collection of Weeds - NO
SEEDS HEADS



Floral Art

Prizes: 1st place: \$5.00 Sponsored by Tamborine Mountain Garden Club, 2nd place: \$2.00

EXHIBITORS PLEASE NOTE:

EXHIBITOR DROP OFF FRIDAY, 15^h MARCH, FROM 2 PM TO 6 PM.

COLLECTION OF EXHIBITS SUNDAY, 17TH MARCH FROM 10 AM TO 12 PM

1. An 'Accessory' is anything used with the arrangement other than fresh flowers or plants, i.e. the container and/or the base.
2. No Arrangement is to Exceed 610 mm (24") in width.

Most Successful for Floral Art

Sponsored: Hartley Road

Landscaping Voucher

Most Successful Exhibitor Classes

42-43 – Junior

Sponsored: Fudge Heaven Voucher

Most Successful Class 37

Sponsor: Green Grocer

Most Successful Exhibitor Classes

44-46

Sponsor: TM Garden Club \$20.00

Merit Award Junior

*Sponsor: Terra Firma Fertilizer
Prize*

Most successful Class 36 Fun Arrangement

*Sponsor: Long Road Collective –
Gift*



General

31. Arrangement Using one Flower

Sponsored by TMAH&I Society

32. Arrangement - "Do Your Own Thing"

Sponsored by TMAH&I Society

33. Arrangement Using Flowers of the Same Variety (5 Blooms Total)

Sponsored by TMAH&I Society

34. Garden Posy

Sponsored by TMAH&I Society

35. Australian Arrangement - Using Australian Native

Sponsored by TMAH&I Society

36. Fun Arrangement

Sponsored by TMAH&I Society

37. Floral Arrangement Using Fruit and Vegetables

Sponsored by TMAH&I Society

38. Foliage Arrangements

Sponsored by TMAH&I Society

39. Tea Pot Arrangement

Sponsored by TMAH&I Society

40. Miniature Arrangement

Not to exceed 7cm high by 11cm wide
Sponsored by TMAH&I Society

41. Shoulder Spray - Displayed on Saucer

Entries not displayed on a saucer will be disqualified.

Sponsored by TMAH&I Society
Class 47A Wreath

Junior Classes (Under 14 years)

42. Animal or Bird - using Fruit or Vegetables

Sponsored by Tamborine Mountain Garden Club

43. Posy

Sponsored by Tamborine Mountain Garden Club

Junior Classes (14 - 17yrs)

44. Hat with Fresh Flowers

Sponsored by Tamborine Mountain Garden Club

45. Posy

Sponsored by Tamborine Mountain Garden Club

46. Floral Arrangement

Sponsored by Tamborine Mountain Garden Club



Tamborine Mountain Café

Long Rd, Tamborine Mountain



Potted Plants

Prizes: 1st place: \$5.00 Sponsored by Tamborine Mountain Garden Club, 2nd place: \$2.00

EXHIBITORS PLEASE NOTE:

**EXHIBITOR DROP OFF FRIDAY, 15^h MARCH, FROM 2 PM TO 6 PM.
COLLECTION OF EXHIBITS SUNDAY, 17TH MARCH FROM 10 AM
TO 12 PM**

- 1. Plants must have been in the care of the Exhibitor for no less than 3 months.**

Most Successful Exhibitor Potted Plants

Sponsor: Hartley Road Landscaping Voucher

Most Successful Class 54

Sponsor: Edge Hairdressing

Most Successful Class 51

Sponsor: Mason wines



Most Successful Classes 55

Sponsor: Fudge Heaven Voucher

Merit Award Junior

Sponsor: Terra Firma Fertilizer Prize

Most Successful Exhibit Class 53

Sponsor: TM Nursery Voucher

Sponsored by Tamborine Mountain Garden Club

51. Cacti or Succulent Group

Sponsored by Mason wines -Gift.

52. Bonsai

Sponsored by Tamborine Mountain Garden Club

53. Plant in Bloom, variety not named in other classes.

Sponsored by TM Nursery

54. Hanging Plant Flower/Foliage

Sponsored by Edge Hairdressing

General Classes

47. New Guinea Inpatients

Sponsored by Tamborine Mountain Garden Club

48. Orchid - Any Species

Sponsored by Tamborine Mountain Garden Club

49. Foliage Plant/Fern

50. Begonia

Junior Classes (14-17 years)

55. Cacti or Succulent Garden

Sponsored by Tamborine Mountain Garden Club

56. Plants in a Novel Container

Sponsored by Tamborine Mountain Garden Club

Section 2 - Fruit, Vegetables & Eggs

Prizes: 1st place: \$5.00, 2nd place: \$2.00

EXHIBITORS PLEASE NOTE:

**EXHIBITOR DROP OFF FRIDAY, 15th MARCH, FROM 2 PM TO 6 PM.
COLLECTION OF EXHIBITS SUNDAY, 17th MARCH FROM 10 AM TO 12 PM**

Most Successful Exhibitor Section 2

*Sponsor: Hartley Road Landscaping
Voucher*

Most Successful Exhibitor Junior Classes Vegetables

Sponsor: Sponsor: Mitre 10 Tool Kit

Most Successful Exhibitor Junior Classes – Fruit

Sponsor :Terra Firma Fertilizers.

Most Successful Exhibitor Class 91

*Sponsor: Olive Branch Health Foods
Shop Voucher*

Most Successful Exhibit Class 67

Sponsor: Cinnamon Bun – Voucher

Most Successful Classes 96-98

Sponsor: Yates Seeds

Most Successful Exhibitor Class 70

Sponsor Greengrocer – Voucher

Most Successful Exhibitor Eggs

Sponsor: Food works Voucher

Most Successful Exhibitor Junior Eggs

Sponsor: H2O Tank Doctor \$20

Merit Award General Classes

Terra Firma Fertilizer Prize

First in Class First in Class 91

Sponsor: Greengrocer Voucher

First in Class First in Class 93

Sponsor: Terra Firma Fertilizer

Fruit

General

57. Citrus - Any, Three Fruits

**58. Bananas - Any Variety Three
Fruit**

59. Sapote - three fruit.

60. Feijoa - Three fruit.

**61. Guava - any variety, three
fruit.**

**62. Strawberries - any variety, 12
fruit.**

63. Tamarillo - three fruit.

64. Chestnuts - Twelve Nuts

**65. Queensland Macadamia Nuts
- Twelve Nuts**

**66. Fruit - any variety not
already listed, three fruit.**

**67. Fruit - Collection - not less
than three varieties**

**68. Grapes - Any Variety - One
Bunch**

**69. Kiwi Fruit - Any Variety,
Three fruit.**



- 70. Tomatoes - Large any Variety, Three Fruit
- 71. Tomatoes - Small variety - Six
- 72. Asian Fruit - Any Variety, Three Fruit

Junior (Under 14 years)

- 73. Collection of Fruit - Three Pieces
- 74. Garden antics - Any Odd Shape Fruit
- 75. Fruit - One Piece

Vegetables

Root vegetables must have tops attached.

General

- 76. Silver beet - Six Stalks
- 77. Carrots - Three
- 78. Radish - Three
- 79. Beans - Twelve Pods
- 80. Chillies - Six
- 81. Kale - six stalks
- 82. Garlic - Three bulbs



- 83. Onion Variety - Three
- 84. Eggplant - Two
- 85. Potatoes - Sebago, Three
- 86. Potatoes - any other variety, Three
- 87. Sweet Potatoes - Three
- 88. Lettuce - Any variety, One Head
- 89. Any Root Vegetable – Three
- 90. Green Leafy Vegetable other than Silver beet - Three stems
- 91. Collection of Mixed Vegetables

1st place sponsored by Greengrocer Voucher

- 92. Collection of Mixed Herbs
- 93. Ginger - One Piece
- 94. Turmeric - One Piece
- 95. Capsicum – Three
- 96. Pumpkin - Any variety, One
- 97. Zucchini - Three
- 98. Corn - Any variety, Three Cobbs
- 99. Asian Vegetable - Any variety

Junior (Under 14 years)

- 100. Collection of Vegetables - Three Pieces
- 101. Garden Antics - Any Odd Shape
- 102. Any Vegetable - One Pi



Eggs

1st and 2nd Places

Sponsor: TM Golf Club

General

- 103. Hen eggs - Carton of Six White**
- 104. Hen eggs - Carton of Six Brown**
- 105. Duck eggs - Carton of Six**
- 106. Eggs - Any other variety, Carton of Six**
- 107. Bantam Eggs - Carton of Six**

Junior (under 14years)

- 108. Hen eggs - Carton of Six**
- 109. Duck Eggs - Carton of Six**
- 110. Bantam Eggs - Carton of Six**



Section 3 - Cooking & Home Produce

Prizes: 1st place: \$5.00, 2nd place: \$2.00 Sponsored by H2O Tank Doctor,
Classes 2-5 & 13 1st \$10 Sponsored by Red Line Driving School.

EXHIBITORS PLEASE NOTE:

EXHIBITOR DROP OFF FRIDAY, 15TH MARCH, FROM 2 PM TO 6 PM.

COLLECTION OF EXHIBITS SUNDAY, 17TH MARCH FROM 10 AM TO 12 PM

1. **Dark Rich Fruit Cake Entries** are to be submitted to the Office, prior to 10:00 am. Entry to the Grounds is on presentation of your completed Entry Form. Entry forms available at www.tamborinemountainshowgrounds.com. Cakes must be submitted in a sealed container.
2. **Cookery entries** must be presented to the steward: In a sealed disposable container/bag or on a strong disposable plate sealed with gladwrap.
3. **Half cakes** to be presented i.e. cut in half, allowing judges to see three sides and a cut end.
4. **All cake entries** to be presented in a sealed covering and on a strong disposable plate.
5. **Entries not in a sealed disposable container/bag** will not be accepted.

Most Successful Exhibitor Section 3

Sponsor: Harvey Norman Gift Card

Best in Class – Class 153 - 156

Sponsor: Fudge Heaven Voucher

Most Successful Exhibitor Classes 138 - 141

Sponsor: Spice of Life Café & Deli Voucher

Most Successful Exhibitor Classes 142 to 149

Sponsor: Treehouse Café - Voucher

Most successful Exhibitor Class 142 to 140

Sponsor: Treehouse Café: Voucher

Most successful Exhibitor Class 120

Sponsor: Treehouse Café – Voucher

Most successful Exhibitor Class 9

Sponsor: Bygone Days; Silver cake serving tongs

Most successful Exhibitor Class 113

Sponsor: Spice of Life Café & Deli Voucher

Most Successful Class 131

Sponsor: Treehouse Café - Voucher

Most successful Exhibitor Class 138 - 141

Sponsor: Fudge Heaven Voucher

Best in class – Class 127

Sponsor: Cinnamon Bun Shop Voucher

Merit Award – Most Successful Junior Award

Sponsor: Christmas Shop

Harvey Norman

Baking

Specialist

111. Dark Rich Fruit Cake
(Recipe, entry form, and more information at www.tamborinemountainshowgrounds.com however, you can use your own recipe. Please ensure your cake meets all entry requirements.)

Sponsor: Tamborine Mountain A H & I Soc Prize: \$100

Judging on Stage at 10:00 am on Show Day. Details in an envelope given to winner.

112. Boiled Fruit Cake -
20cm(8") round tin, No Icing
First Prize: Red Line Driving School \$10.00

113. Any Other Fruit Cake -
20cm (8"), square tin, no icing
First Prize: Red Line Driving School \$10.00

114. Carrot Cake - 20cm (8")
round tin, Lemon icing
First Prize: Red Line Driving School \$10.00



Open

115. Chocolate Cake - icing on top only
First Prize: Red Line Driving School \$10.00

116. Orange Cake - Icing on top only, can be decorated with orange peel

117. Banana Cake

118. Rhubarb Cake

119. Cinnamon Tea Cake
18cm(7"), round cake,
cinnamon sugar on top

120. Muffins - Sweet, Plate of four

121. Muffins - Savoury, plate of four

122. Slice with Three Later- Plate of Six

First Prize: Red Line Driving School \$10.00

123. Unbaked Slice - Plate of Six

124. Pikelets - plate of Six

125. Scones - Plate of Four

126. Pumpkin Scones

127. Date or Nut Loaf - loaf tin

128. Bread – Machine Made
Focaccia 1 Loaf

129. Bread – Machine Made –
Wholemeal 1 Loaf

130. Soda Bread – 1 Loaf

131. Sourdough Bread -1 Loaf

132. Lamingtons - Plate of Four

133. Cornflake Biscuits with
Fruit - Plate of four

134. Melting Moments - Plate of four

135. Anzac Biscuits - Plate of Four

136. Novelty Cake - Decorated
using Fondant or Sugar paste

137. -Naked Cake - Judged on
Decoration only.

138. Decorated Butter Cake

139. Sugar Art - Specimen
Flower, Orchid (Flower, Bud
and Leaf)

140. Sugar Art - Any Decorative Item



ICED CAKES

EXHIBITORS PLEASE NOTE:

- The base (wooden), presentation board or drape must be fitted within the perimeter of a 45 cm square, unless otherwise stated.
- The base boards must be raised on cleats sufficient to enable ease of handling.
- No non-sugar ornaments allowed.
- Reasonable use is permitted of wire, tape, stamens, ribbon and tulle.
- No pins allowed holding ribbons etc.
- No artificial paper fabric leaves or flowers to be used, no feathers.
- Lace and extension work is not mandatory; however, variety of decorating skills within the bounds of good taste must be executed.
- All entries must be the handiwork of the exhibitor.
- Polystyrene blocks or dummies may be used.
- All entries will be return to exhibitor.
- All entries must arrive completely covered.
- Failure to comply with these conditions will result in the exhibit not being eligible for a prize.

Junior Class (5Yrs and Under)

- 141. Decorate Bought Biscuit - Plate of Three**
- 142. Edible Bracelet - Lollies**
- 143. Edible Necklace- Fruit**
- 144. Decorated Cup Cake**

Junior Class (6yrs to 16yrs)

- 145. Plate of Slice - Four pieces**

- 146. Lemonade Scones**

Lemonade scones

4 cups of self-raising flour

1 cup of lemonade

375ml of cream

Method

Mix all ingredients together and back at 200c for approx. 15mins

- 147. Pumpkin Scones - Plate of Four**

- 148. Choc Chip Cookies - Plate of Four on a plate**

- 149. Jam Drop Biscuits - Plate of Four on a plate**

- 150. Anzac Biscuits - Plate of Four on a plate**

- 151. Cornflake Biscuit - Plate of Four on a plate**

- 152. Health Packed School Lunch**





Sweets & Lollies

Most Successful Preserves & Sweets

Sponsor: Mop Tops on the Mountain Voucher

Most Successful Classes 163-166 (junior)

Granny Macs Fudge Voucher (\$50)

Most Successful Class 167-170 (junior)

Granny Macs Fudge Voucher (\$50)

Most Successful Exhibitor Classes 153-162

Open

- 153. Fudge - any variety, boiled method, plate of six
- 154. Marshmallow - plate of 6, 3 plain 3 toasted
- 155. Coconut Ice - plate of 6, not capha variety
- 156. Rum Balls
- 157. Brigadeiro- plate of 6, see included recipe.
- 158. French Jellies - plate of six, dusted in sugar. 2 colour layers
- 159. Home Made Chocolate
- 160. Butterscotch – plate of 6
- 161. Rocky Road - plate of 6, any variety
- 162. Gift selection of sweets - 12 pieces, 4 varieties 3 of each

Sponsor: T M Newsagency Voucher

Most Successful Junior

Sponsor: Granny Macs Fudge Hamper

Most Successful Exhibitor Classes 198- 201

Sponsor: Angela's Pantry – Voucher.

Most Successful Exhibitor Class 197

Sponsor: Picnic Real Food Bar Voucher (\$40)



Junior - Under 14yrs

- 163. Fudge - Any variety, Plate of 6
- 164. Rocky Road - Plate of 6
- 165. Apricot Balls - plate of 6
- 166. Moulded Chocolate - Plate of 6

Junior - 14yrs -17yrs

- 167. Fudge - Any variety, Plate of 6
- 168. Homemade Chocolate - Plate of 6, (Recipe attached)
- 169. Marshmallow - Plate of 6,
- 170. Rocky Road - Plate of 6, Any Variety

EASY MIX CHERRY CAKE

Ingredients: 2 eggs, 125 g butter, 1 cup sugar, 2 cups self-rising flour, 2/3 cup milk, 1 teaspoon vanilla essence, 200 cherries

Method: Chop cherries and mix in approximately 1/3 cup of self-rising flour from the 2 cups. Combine lightly beaten eggs, softened butter, sugar, sifted flour, milk & vanilla into mixing bowl. Beat at low speed until blended, then on high for 4 minutes. Fold in cherries & pour into well prepared 8 inch or 20 cm round tin and bake in moderate oven for 40 – 45 minutes or until cooked.

Brigadeiro – Class 153

Ingredients: 395gm can of condensed milk, ¼ cup of 100% cocoa powder, 1 tbs of salted butter, 1 pinch of salt, 200gm tub of double cream, 150gm packet Chocolate Sprinkles

Method:

1. In a small saucepan over medium heat, combine condensed milk, sifted cocoa powders, salt, butter and cream.
2. Turn off heat and keep stirring until cocoa dissolves.
3. Return to medium heat and stir for 15mins. Stir nonstop until you see the

Preserves

Open

- 171. Marmalade – Orange
- 172. Marmalade - Grapefruit
- 173. Marmalade - Any other variety
- 174. Jam - Strawberry
- 175. Jam - Rosella
- 176. Jam - Tomato
- 177. Jam - Any other Variety not previously listed

bottom of the pan. Allow to cool completely.

4. Grease your hands with butter and roll 1tsp of mixture at a time to make 30 balls. Roll balls in sprinkles.
5. Serve



Homemade Chocolate Recipe

Ingredients: 125gm copha, 125g pure icing sugar, 6 tablespoons cocoa powder, 4 tablespoons powdered milk, Pinch of Salt

Method:

1. Sift icing sugar, cocoa, powdered milk and salt into a bowl.
2. Melt copha and pour over dry ingredients and mix until smooth.
3. Flatten the mixture into a square tray and refrigerate.
4. Cut into squares when set.

178. Selection of 3

Jam/Marmalade Varieties

Class Jelly Sweet/Savoury

179. Lemon Butter

180. Butter - Other variety (Passionfruit, Citrus)

181. Sweet Mustard Pickles

182. Mustard Pickles



- 183. Pickled Onions
- 184. Pickled Vegetables
- 185. Tomato Relish
- 186. Relish Any other Variety.
- 187. Selection of 3 Different Varieties
- 188. Pesto - Basil
- 189. Pesto – Any Other Variety
- 190. Tomato Relish
- 191. Sauce - Sweet
- 192. Sauce – Savoury
- 193. Honey – Local Any Variety
- 194. – Honeycomb - Local
- 195. Tapenade – Any Variety

- 196. Flavoured Vinegar- Any Variety
- 197. Gift Selection of James, Chutneys Etc.

Jars to be no more than 250mls, no less than 6 in a display suitable for a gift.

Novice

Restricted to competitors who are first time exhibitors.

- 198. Marmalade - Any Variety
- 199. Jam - Any Variety
- 200. Pickles - Any Variety
- 201. Chutney - Any variety



Section 4 - Home Brew

EXHIBITORS PLEASE NOTE:

EXHIBITOR DROP OFF – FRIDAY 15TH MARCH FROM 2PM – 6PM.

COLLECTION OF EXHIBITS, 17TH MARCH 10AM – 12PM

ENTRY \$3.00 PER ENTRY PER CLASS.

1. Entries must be the product of the person entering.
2. Entrants **MUST** be 18yrs of age.
3. All care will be taken with entries, but no responsibility will be accepted.
4. All entries will be judged at appropriate temperatures.
5. Judges will be suitably qualified persons in the beverage industry. No person shall judge any class wherein a member of their household has entered in the Section.
6. Entry requires 2 bottles of the same beer (i.e. 2 bottles for each entry).
7. Bottle capacity preferred is ‘longneck’, approximate 640-750mls), but where these are unable to be used, then multiple smaller bottles should be a reasonable representation of the beer style entered.
8. All beers should be a reasonable representation of the beer style entered.
9. Details on the Tamborine Mountain Show Home Brew Entry Form **SHOULD** correspond with the data on the entry label. The “entry number” will be allocated at point of entry.
10. The decisions of the judges and arbitrator **ARE FINAL**. Any **APPEALS** on judging must ~~di~~be directed in writing to the Show Society Secretary at cost to the person lodging appeal. The Show Society Executive will then hear the appeal and return a finding.
11. Beers entered out of class will be re-classed unless previously judged.
12. All beers must be categorised as matching to a style within each category. It is the competitor’s choice as to which style they wish to enter their beer. Categories will be entered as follows (example); Lager – 2 – Pilsner- 5D German Pils. One brewer can enter as many beers as they like but cannot enter 2 beers within the same sub-category (Pale Lager for example).

Beer must be entered as one of the following styles. The below styles will be grouped. This competition is using the BJCP Style Guidelines (2021). These guidelines can be found across various apps for all devices.

Fortitude will supply \$250 in gift vouchers. This will be given out as: 1 x \$50 voucher for each of the 4 main categories. These will be judged from the gold medal winning beers in each of the 4 categories. From these 4 beers, one will be chosen as the beer of the comp for a final \$50 voucher.

Medals are chosen as according to the following:

Gold Medals – Score 38 – 50

Silver Medals – Score 30 – 37

Bronze Medals – Score 21 – 29

No Medals – Score 0 – 21



Lager – Styles in Classes 1- 5 will be grouped.

Ale – Styles in Classes 6 – 8 & 12 will be grouped.

Dark – Styles in Classes 9 – 11 will be grouped.

Other – Styles in categories 13 & 14 will be grouped.

Most Successful Exhibitor Section 4

Sponsor: Fortitude Brewery Voucher (\$50.00) x 1

Trophy donated by Beaudesert Trophies

Most Successful Exhibitor in Classes 1 – 4

Sponsor: Fortitude Brewery Vouchers (\$50.00) x 2 Cauldron Distillery Vouchers

Beer

202. Pale Lager

Included in this class see below.

1. American Light Lager
2. American Larger
3. International Pale Lager
4. Czech Pale Lager
5. Munich Helles
6. Festbier
7. German Leichtbier
8. Helles Exportbier
9. Kellerbier (Pale Kellerbier)

203. Pilsner

Included in this class see below.

1. Czech Premium Pale Lager
2. German Pils
3. Historical Beer (Pre-Prohibition Lager)

204. Amber Lager

Included in this class see below.

1. International Amber Lager
2. Czech Amber Lager
3. Marzen
4. Rauchbier
5. Vienna Lager
6. Kellbier (Amber Kellerbier)
7. California Common

205. Dark Lager

Included in this class see below.

1. International Dark Lager
2. Czech Dark Lager
3. Munich Dunkel
4. Schwarzbier

206. Bock

Included in this class see below.

1. Hekkes Bock
2. Dunkley Bock
3. Doppelbock
4. Eisbock

207. Pale Ale

Included in this class see below.

1. Cream Ale
2. Kolsch
3. British Golden Ale
4. Australian Sparkling Ale
5. Blonde Ale
6. American Pale Ale
7. Belgian Blond Sle
8. Saison
9. Trappist Single

208. IPA

Included in this class see below.

1. English IPA
2. American IPA
3. Specialty IPA (All)
4. Double IPA

209. Amber Ale

Included in this class see below.

1. Altbier
2. Ordinary Bitter
3. Best Bitter
4. Strong Bitter
5. Scottish Light
6. Scottish Heavy
7. Scottish Export
8. Irish Red Ale

9. American Amber Ale
10. Biere de Garde
11. Belgian Dubbel
12. Historical Beer (Kentucky Common)

210. Brown Ale

Included in this class see below.

1. Dark Mild
2. British Brown Ale
3. American Brown Ale
4. Historical Neer (London Brown Ale)



Class 214A Stout

Included in this class see below.

1. Irish Stout
2. Irish Extra Stout
3. Sweet Stout
4. Oatmeal Stout
5. Tropical stout
6. oreign Extra Stout
7. American Stout
8. Imperial Stout

211. Strong Ale

Included in this class see below.

1. British Strong Ale
2. Old Ale
3. Wee Heavy
4. English Barleywine

5. American Strong Ale
6. American Barleywine
7. Wheat wine
8. Belgian Garden Strong Ale
9. Belgian Trippel
10. Belgian Dark Strong Ale

212. Wheat Beer

Included in this class see below.

1. American Wheat Beer
2. Weissbier
3. Dunkles Weissbier
4. Weizenbock
5. Berliner Weisse
6. Lambic
7. Gueuze
8. Fruit Lambic
9. Witbier
10. Historical Beer (Gose)
11. Historical Beer (Piwo Grodziskie)
12. Historical Beer (Lichtenhainer)
13. Historical Beer (Roggenbier)
14. Historical Beer (Sahti)

213. Sour Ale

Included in this class see below.

1. Flanders Red
2. Oud Bruin

Section 5 - Needlework

Prizes: 1st place: Classes 221,222, 224, 227, 228-\$10 Vouchers Sponsored by Fabric Frenzy, all other Classes \$5.00, 2nd place: \$2.00, unless otherwise stated.

EXHIBITORS PLEASE NOTE:

EXHIBITOR DROP OFF FRIDAY, 15th MARCH, FROM 2 PM TO 6 PM.

COLLECTION OF EXHIBITS SUNDAY, 17TH MARCH FROM 10 AM TO 12 PM

1. All exhibits must be the original work of the exhibitor and must have been completed within the past twelve months.
2. Wool, acrylic and nylon may be use in knitting and crochet, unless otherwise specified.
3. As per Section 5 of the General and Section Rules, professional artists and crafts people may enter to exhibit, but will not be judged and therefore will not be eligible for prize money.
- 4 Exhibits can be Donated to an Auction: to raise funds for Show society.
Auction held on Sunday. Tick Donation or Collect on Entry form.

Most Successful Exhibitor Section 5

*Sponsor: Fabric Frenzy Hamper
\$50.00- Presented on stage*

Most Successful Exhibitor Class 214 - 218

Sponsor: TM Creative Arts - \$20

Most Successful Exhibitor Class 234 – 244

*Sponsor: TM Creative Arts Cash
Price \$10.00*

Most Successful Exhibitor Class 245 – 250

Sponsor by The Polish Place

Most Successful Junior – 12 years and under classes 251 – 257

*Sponsor: Under the Greenwood
Tree Voucher*

Most Successful Junior — 13 to 17years Classes 258 to 264

*Sponsor: Under the Greenwood
Tree Voucher*

Best in class 221, 222, 224, 227, 228 (5 vouchers.

Fabric Frenzy Voucher \$10.00

Best in Class 230

*Sponsor: 360 Degrees Shop – Gift
– Placemats*

First in Class 217

*Sponsor Witch Scents Organics
Gift*

First in Classes 220 & 229

*Sponsor TM Creative Arts cash
prize \$10.00*

First in Classes 221 & 223

*Sponsor TM Creative Arts cash
prize \$20.00*

Quilts Across Queensland

The quilt judged best exhibitor overall in Classes 214,215,216 is eligible to enter Class 11 in the Quilts Across Queensland Competition at the Royal Queensland Show, 2024.

An envelope given to overall winner with details.

Best in Classes 214, 215 ,216 Prize: \$20

Sponsored By – Tamborine Mountain Creative Arts

Quilting

- 214. Quilt - By Hand, 1 piece
- 215. Quilt - By Machine - 1 Piece
- 216. Quilt - Composition of Hand & Machine, 1 Piece
- 217. Quilting item by Hand - Not a quilt, 1 piece
- 218. Quilting item by Machine - Not a quilt, 1 piece

Applique

- 219. Machine Stitched - Any Article
- 220. Hand Stitched - Any Article

Fabric Frenzy



Crochet

- 221. Crochet - Any article of baby wear
- 222. Crochet - Rug (Floor or Lap)
- 223. Crochet - Cardigan or Jumper (Not Baby)

- 224. Crochet - Shawl, scarf or Poncho
- 225. Crochet - (no.20 or no.40) - Table Centre, Runner or Tablecloth
- 226. Crochet - Hand Spun Wool - Any article
- 227. Crochet - Any other Article

Knitting

- 228. Knitting - Rug, Shawl, Scarf or Wrap
- 229. Knitting - Cardigan or Jumper (Not Baby)
- 230. Knitting - Any Article of Baby wear
- 231. Knitting - Hand Spun Wool - Any Article
- 232. Knitting - Any other Article
- 233. Knitting or Crochet - Toy

Other Items

- 234. Hand Embroidery _ Any Article
- 235. Patchwork Article - to be judged on patchwork only
- 236. Coat Hanger - Knitted or Crochet
- 237. Freeform knit/Crochet - Any Article
- 238. Cushion - Traditional or Novelty (Not Applique)
- 239. Tea Cosy - Traditional or Novelty

- 240. Teddy Bear - Fur handmade
- 241. Soft Toy - Handmade, suitable and safe for a child
- 242. Doll or other Handmade toy - Not suitable of a child
- 243. Innovative item using recycled fabrics/items.
- 244. Any other Needlework Not previously Listed.

Senior Classes (Over 70 Years)

- 245. Crochet - Any Article
- 246. Knitting - Any Article
- 247. Embroidery by Hand - Any article
- 248. Embroidery by Machine - Any article
- 249. Patchwork - Any Item
- 250. Any Other Article

Junior - 12 Years and under

- 251. Beading - Any Article
- 252. Knitting - Any Article

- 253. Crochet - Any Article
- 254. Felting - Hand Made, Any Article
- 255. Machine Sewing - Any Article
- 256. Bag or Purse - Handmade using 2 or more craft media.
- 257. Any Other Item not already listed.

Junior - 13 years to 17 years

- 258. Beading - Any Article
- 259. Knitting - Any Article
- 260. Crochet - Any Article
- 261. Felting - Hand Made, Any Article
- 262. Machine Sewing - Any Article
- 263. Bag or Purse - Handmade using 2 or more craft media.
- 264. Any Other Item not already listed.



Section 6 - Fine & Creative Arts

Prizes: 1st place: \$5.00, 2nd place: \$2.00, unless otherwise specified.

EXHIBITORS PLEASE NOTE:

EXHIBITOR DROP OFF FRIDAY, 15th MARCH, FROM 2 PM TO 6 PM.

COLLECTION OF EXHIBITS SUNDAY, 17th MARCH FROM 10 AM TO 12 PM

1. All exhibits must be the original work of the exhibitor and must have been completed within the past twelve months.
2. Wool, acrylic and nylon may be used in knitting and crochet, unless otherwise specified.
3. As per Section 6 of the General and Section Rules, **PROFESSIONAL ARTISTIS AND CRAFT PEOPLEMAY ENTER TO EXHIBIT BUT WILL NOT BE HUDGE AND THEREFORE WILL NOT BE ELIGIBLE FOR PRIZE MONEY**
4. Exhibits can be donated to an Auction – to raise funds for the Show Society. AUCTION TO BE HELD ON SUNDAY. Please advise if wanting to donate item on entry form and to the steward collection entry.

Most Successful Exhibitor Section 6

Sponsor: Main Fitness Voucher

Most Successful Exhibitor Junior Classes – 12 years and Under

Sponsor: TM Creative Arts (\$20)

Most Successful Exhibitor Junior Classes – 13years to 17years

Sponsor: TM Creative Arts (\$20)

Most Successful Junior Entrant From both Junior Sections

Sponsor: TM Creative Arts (\$20)

Most Successful Exhibitor in Class 286

Sponsor: ACE Designs – By Alyson – Personal Embroidered Towel

First In Class 265

Sponsor: TM Creative Arts

Most Successful Exhibitor Class 266

Sponsor: The Escarpment – Voucher

Most Successful Exhibitor Class 273

Sponsor: Modern Classic Artifacts & Jewels – Gift

Most Successful Exhibitor Class 275

Sponsor: Spellbound – Voucher

Most Successful Exhibitor Classes 277 – 279

Sponsor: TM Golf Club

First in Class 263 – Class 277

Sponsor: TM Creative Arts

First in Class 275

Sponsor: Christopher Duncan \$100 Lego Voucher

First in Class 287

Sponsor: Christopher Duncan \$25.00 Lego Voucher

First in Class 297

Sponsor: Christopher Duncan \$25.00 Lego Voucher



Hand Crafts & Art

Open Class

- 265. Weaving - Hand woven - 1 Piece
- 266. Doll - Dressed
- 267. Wall Hanging or Picture - Other than Tapestry or Embroidery
- 268. Coat Hanger - Any Medium other than Knitting, Crochet or Patchwork
- 269. Felting - Hat or Slippers
- 270. Nuno Felting
- 271. Needle Felting
- 272. Hand Dyed - One Article
- 273. Jewellery - Handmade
- 274. Folk Art
- 275. Any Object decorated with Decorative Painting
- 276. Mosaics
- 277. Cards Handmade - 3 Distinct Methods (ie. Quilling, Painted, Origami)
- 278. Off the Page Scrapbook item - NO larger than 30cm x 30cm
- 279. Item made from Recycled materials - no larger than 30cm x 30cm
- 280. Woodwork - Carved
- 281. Woodwork - Not Carved or Turned
- 282. Carving - Any material other than wood, 1 Small Item
- 283. Rug - Not Knitted or Crochet, 1 Article
- 284. Diamond Dot Picture - Framed
- 285. Diamond Dot Item - Not a picture e.g. Card, Bookmark

- 286. Macrame - Any Article
 - 287. Papercraft other than card, paper making or scrapbooking.
 - 288. Leatherwork - any Article
 - 289. Lego Creation
1st place - \$50 lego voucher Sponsored by Christopher Duncan
 - 290. Any Article not already listed.
 - 291. Pottery - Sculpture
 - 292. Potter - Hand Building
- NO LARGE ITEMS
OF MANAGABLE SIZE
- 293. Pottery – Throwing



Junior Class - 12 years and under

- 294. Animal made from Recycled Materials - NO LARGE ITEM
- 295. Hand Made Jewellery - Any Article (No Kits) 1

- 296. Handmade Wooden Article
- Any Article (Not Large)
- 297. Card - Birthday,
Christmas, Handmade or
Computer made.
- 298. Pottery - Fired
- 299. Papier Mache - Not Large
- 300. Decorative Straw Hat -
Judge on Decoration only
- 301. Original Lego Creation -
NOT FROM A KIT
- 302. Woodwork - Any Article
- 303. Any Item made from
Recycled materials Class 290
Any other item not previously
listed in classes above

Junior Class - 13 years to 17 years

- 304. Felting - Any Item
- 305. Handmade Jewellery
- 306. Card making - Birthday,
Christmas, either Handmade
or Computer made.
- 307. Pottery Fired
- 308. Papier Mache - Not a large
item
- 309. Decorative Straw Hat -
Judged on Decoration Only
- 310. Original Lego Creation -
NOT FROM A KIT
- 311. Woodwork - Any item, Not
large
- 312. Wearable Art from
Recycled materials

- 313. Any other Craft item -
made from recycled material.
- 314. Any other item not
previously listed in classes
above.



Fine Arts - ANY MEDIUM

EXHIBITORS PLEASE NOTE:

EXHIBITORS DROP OFF FRIDAY, 15TH MARCH, FROM 2PM TO 6PM
COLLECTION OF EXHIBITS SUNDAY, 17TH MARCH FROM 10AM TO 12PM

1. All exhibits must be the original work of the exhibitor and must have been completed within the previous 12 months.
2. Entries to be limited to one per person per class.
3. Pictures must be framed or strongly mounted ready for hanging, with name, address, correct class number and price, if item is for sale. The Show Society to receive 20% of sale.
4. Life drawings will be exhibited at the discretion of the Tamborine Mountain A, H & I Society.
5. Junior paintings must be ready to hang.
6. DEFINITION: Any medium means, Pastels, Oils, Acrylic, Water Colour, Pencil. Charcoal, Pen and Ink. Mixed Medium.

Most successful Exhibitor Fine Arts

Sponsor: Lakehouse Accounting (\$200 Cash Prize)

Most Successful Exhibitor Classes 315 – 321

Sponsor: Capan Art (\$50 Cash Prize)

First In Class 319

Sponsor: Musgrave Art Studio (Cash Prize \$25)

Most Successful Classes 322 - 326 Junior

Sponsor: H20 Tank Dr (Cash Prize \$20)

Kym Hart Merit Award Senior

Sponsor: Witches Falls Winery Wine

Merit Award – Junior Entrants

Sponsor: Viking Frames Voucher

Encouragement Award

Sponsor: Bazaar: Perfume bottle

Open

315. View of Tamborine Mountain

316. Landscape/Seascape

317. Still life - Flowers and/or Fruit & Vegetables

318. Wildlife Studies - Land or Sea Animals (Not a Bird)

319. Wildlife Studies - Bird/s

320. Life Drawing

321. Painting in Oil - Any Subject

Junior - (12 years and under)

- 322. My Pet
- 323. Landscape/Seascape
- 324. Still. Life/Abstract
- 325. Local Building
- 326. Any Subject

Junior – (13years to 17 years)

- 327. Animal Study
- 328. Landscape/Seascape
- 329. Still Life/Abstract
- 330. Local Building
- 331. Any Subject



Section 7 - Photography

Prizes: 1st place: \$10.00, 2nd place: \$2.00,

EXHIBITORS PLEASE NOTE:

EXHIBITOR DROP OFF FRIDAY, 15th MARCH, FROM 2 PM TO 6 PM.

COLLECTION OF EXHIBITS SUNDAY, 17TH MARCH FROM 10 AM TO 12 PM

1. Photographs must have been taken within the past twelve months (can be taken on a camera or smart phone). Drone photography is accepted.
2. Due to limited space, no more than 4 entries per person per class.
3. Prints that have won a prize in previous Tamborine Mountain Shows are not eligible for entry.
4. All prints are to be mounted on heavy BLACK cardboard (no other mounting material is acceptable) using double sided or hinging tape. Professional mounting services may be used. Overall thickness should not exceed 5 mm. Entries that become detached from their backing will be disqualified.
5. Photo corners are not acceptable; framed or glass mounted prints are not acceptable.
6. Maximum overall size of print, including mounting materials, should not exceed 16" x 12" (40 cm x 30 cm). It can be smaller, but not larger. Entries that exceed this limit will be disqualified.
7. Section card will be attached to the back of the mount material.
8. The same image cannot be entered into more than one class.
9. NO signatures or marks are to be on your prints.
10. Results may be published in local newspapers with credit going to the photographer.
11. No entries will be accepted via email.
12. The exhibitor extends the copyright of his/her entries for insertion in the local newspaper for promotional purposes or for use on the Schedule cover in the following year.

Champion Print Section 7

*Sponsor: Exposure Unlimited Prize
(Beaudesert Camera Club) Gift*

Most Successful Exhibitor Section 7

*Sponsor Hilary Hudson Photography
Certificate*

Most Successful Entry Class 335

Sponsor Mountain Brew - \$50.00

Most Successful Class 338

Sponsor: Travelling Places Voucher

Most Successful Exhibitor Classes

345- 350 (junior)

*Sponsor: Zebra Stone & Stone
Designs – Gift Pack*

Open Class Encouragement Award

Sponsor: The Manor Voucher

First and 2nd Prizes Junior sections

339 - 350

Sponsor: Eagle Height Pharmacy



**Eagle Heights
Pharmacy**

**Pharmacist
Advice**



Open Classes



- 332. People Portrait - Candid, Sports, Action
- 333. Individual Portrait - 1 person can be glamour.
- 334. Nature - Non-Domestic flora and fauna in the natural environment.
- 335. Local Pictorial Photo - taken in the Scenic Rim.
- Landscape, architecture, machines, animals, special interests, recreation - anything not specific to other categories.
- 336. Monochrome – people (No Studio work)
- 337. Monochrome – Any other subject
- 338. National Photo taken beyond the Scenic Rim From the rest of Australia. Landscape or building,



Junior Classes - Under 12 years, Colour or Monochrome

- 339. People Portrait, candid, documentary etc.
- 340. Nature Non-domestic flora and fauna in the natural environment
- 341. Local Photo - architecture, machines, animals, hobbies, recreation
- 342. Experimental - creatively manipulated with digital software, darkroom.
- 343. Selfie Photo of self/group taken at arm's length or with selfie stick

Note: Self or group portraits taken with remote or self-timer must go in People class.

- 344. Any Subject

Sponsor: Mountain Brew
Coffee shop - Voucher

Junior Classes - 13 years to 17 years, Colour or Monochrome

- 345. People Portrait, candid, documentary etc.
- 346. Nature Non-domestic flora and fauna in the natural environment
- 347. Local Photo - architecture, machines, animals, hobbies, recreation
- 348. Experimental - creatively manipulated with digital software, darkroom.
- 349. Selfie Photo of self/group taken at arm's length or with selfie stick
- 350. Any Subject



Mountain Brew COFFEE SHOP



hilary hudson photography 

Tamborine Mountain Show

SECTION:_____

GENERAL CLASSES ENTRY FORM

EXHIBITOR No. _____

PLEASE USE ONE FORM PER SECTION

Exhibitor's Name: _____				
Address: _____				
Phone: _____				
SECTION	CLASS	EXH No:	EXHIBIT	ENTRY FEE

I hereby authorise_(Name) _____

To collect any, and all, prizes and prize money won by me, on my behalf.

Exhibitor Signature: _____

Collected by (please print name) : _____

Signature: _____

PRIZE MONEY CHECKED AND CORRECT: _____

I agree to donate my entry to an Auction on Sunday 17th March 2024.

----- Signed

All entries are subject to the TM Show Society's By-Laws and Regulations.



**10AM
TILL LATE
SHOWGROUNDS**



SHOW CARNAVAL

16th MARCH 2024

10.30

CardiGras

AM

**CAR SHOW N SHINE
ALL DAY
COMPETITION**

SPONSORS

- **Pethers Rainforest Retreat**
- **Cedar Creek Winery**
- **Albert River Winery**
- **Hinterland Toyota**
- **Hamptons Estate**
- **Pineapple Tours**
- **Fox & Hounds**



Tamborine Mountain Show

SECTION:_____

GENERAL CLASSES ENTRY FORM

EXHIBITOR No. _____

PLEASE USE ONE FORM PER SECTION

Exhibitor's Name: _____				
Address: _____				
Phone: _____				
SECTION	CLASS	EXH No:	EXHIBIT	ENTRY FEE

I hereby authorise_(Name) _____

To collect any, and all, prizes and prize money won by me, on my behalf.

Exhibitor Signature:_____

Collected by (please print name) : _____

Signature: _____

PRIZE MONEY CHECKED AND CORRECT: _____

I agree to donate my entry to an Auction on Sunday 17th March 2024.

-----Signed

All entries are subject to the TM Show Society's By-Laws and Regulations.



SHOWGROUNDS

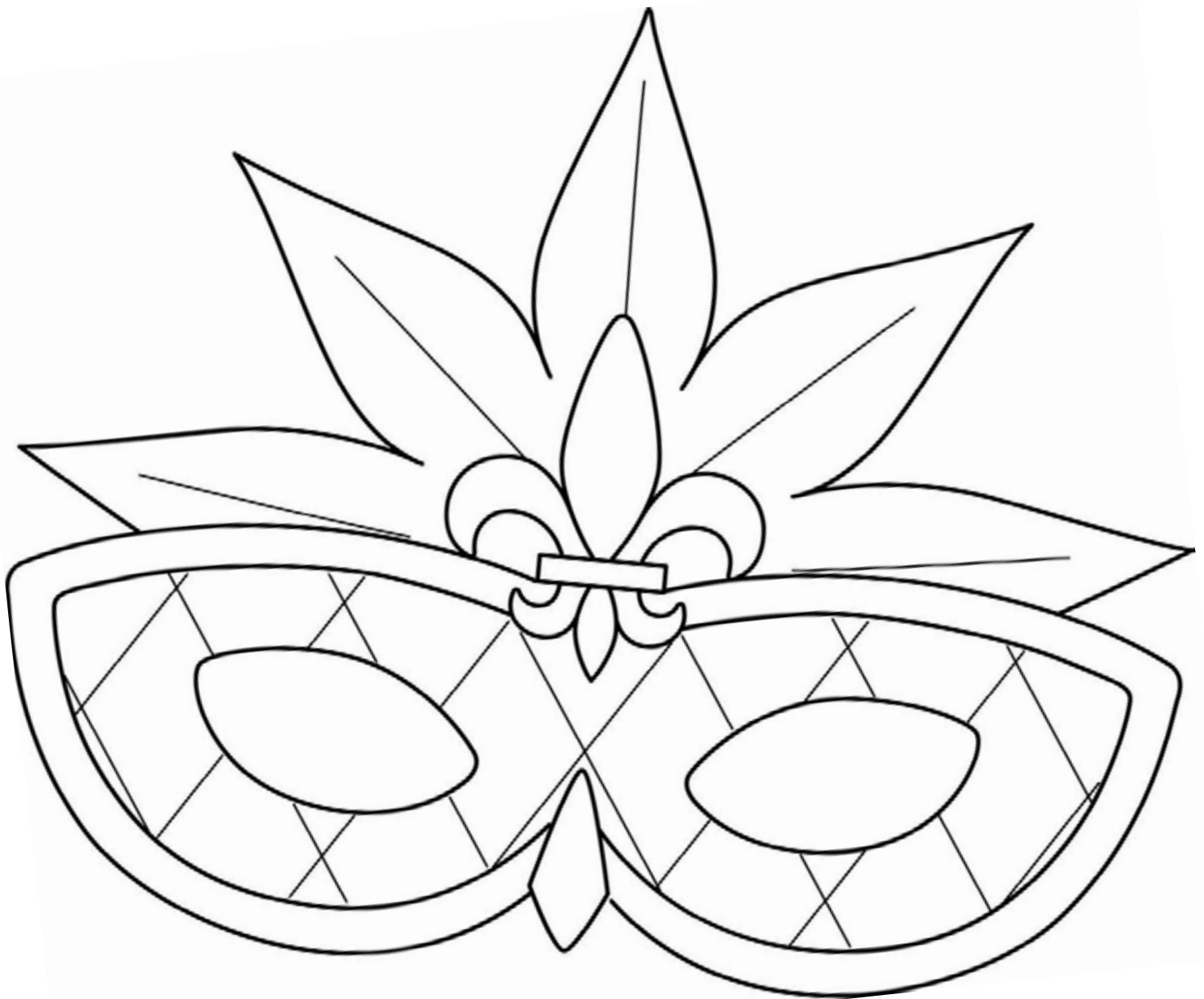
CARNAVAL

16th March

2024



Colouring Competition



Under 10 year olds

- 1st Prize - FREE RIDES Day Pass (\$30)
- 2nd Prize - FREE ShowBag
- 3rd Prize - FREE Carnival Gift



SHOWGROUNDS

CARNAVAL

16th March

2024



Colouring Competition



Over 10 year olds

- 1st Prize - FREE RIDES Day Pass (\$30)
- 2nd Prize - FREE ShowBag
- 3rd Prize - FREE Carnival Gift

Tamborine Mountain Show

SECTION:_____

GENERAL CLASSES ENTRY FORM

EXHIBITOR No. _____

PLEASE USE ONE FORM PER SECTION

Exhibitor's Name: _____				
Address: _____				
Phone: _____				
SECTION	CLASS	EXH No:	EXHIBIT	ENTRY FEE

I hereby authorise_(Name) _____

To collect any, and all, prizes and prize money won by me, on my behalf.

Exhibitor Signature: _____

Collected by (please print name) : _____

Signature: _____

PRIZE MONEY CHECKED AND CORRECT: _____

I agree to donate my entry to an Auction on Sunday 17th March 2024.

----- Signed

All entries are subject to the TM Show Society's By-Laws and Regulations.



10AM
TILL LATE
SHOWGROUNDS



SHOW CARNAVAL

16th MARCH 2024



CARNAVAL
COSTUME
COMPETITION



2pm
Start



WIN
Gift
Vouchers

Proudly Sponsored by





SHOWGROUNDS

10AM
TILL LATE



SHOW CARNAVAL

16th MARCH 2024

Register
by
11.00 am



Stage
Competition
11.30 am

AGE GROUPS

- 13 Years & Under
- 14 to 18 Years

- 1st Prize \$100 *for each category*
- 2nd Place \$50



SPONSOR

The Professionals Real Estate
Tamborine Mountain